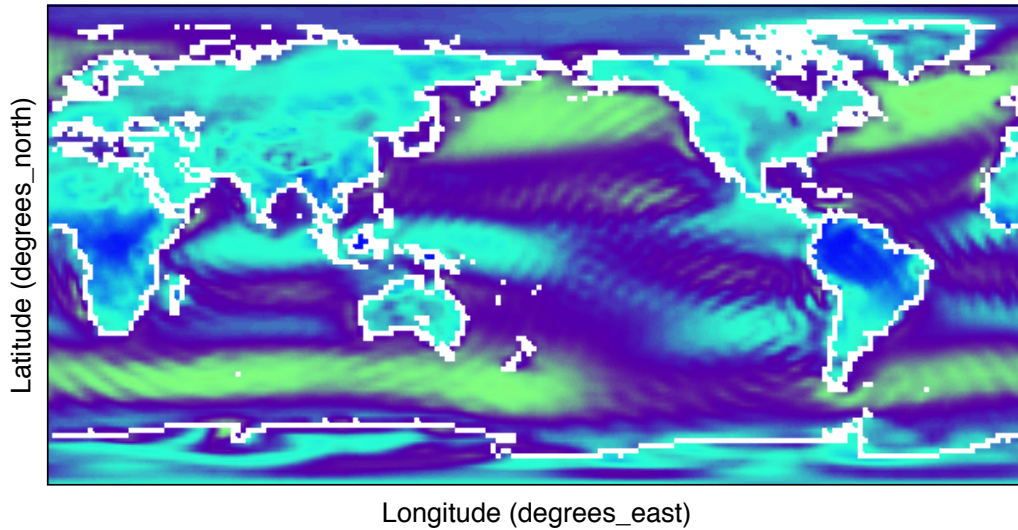


3-hourly total wind speed (m/s)



heyc Thu Nov 21 15:53:35 2013

8x Daily NOAA-CIRES 20th Century Reanalysis V2
Range of 3-hourly total wind speed: 0 to 20 m/s
Range of Longitude: 0 to 358.125 degrees_east
Range of Latitude: -88.542 to 88.542 degrees_north
Current Time: 1.41036e+06 hours since 1800-1-1 00:00:0.0
Frame 1 in File hwnd_10m_mean_YR_1951-1970.nc